

New Mapping Style for Garmin GPS units

Dear Valued Customers,

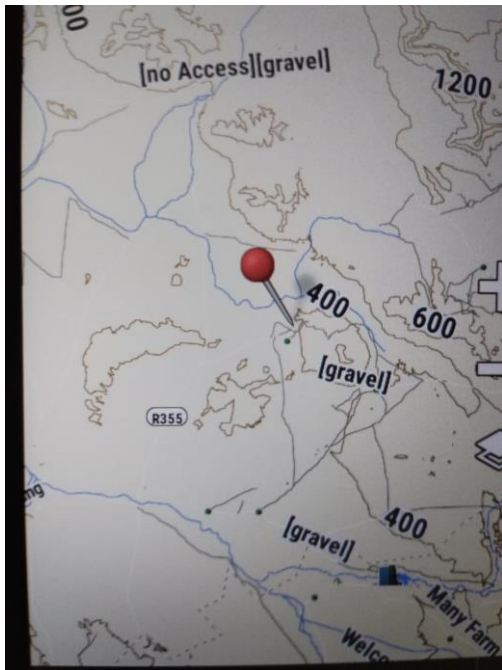
20 September 2024

We hope this message finds you well! We wanted to take a moment to address some exciting recent updates regarding our Garmin styles, as well as the changes that come with them.

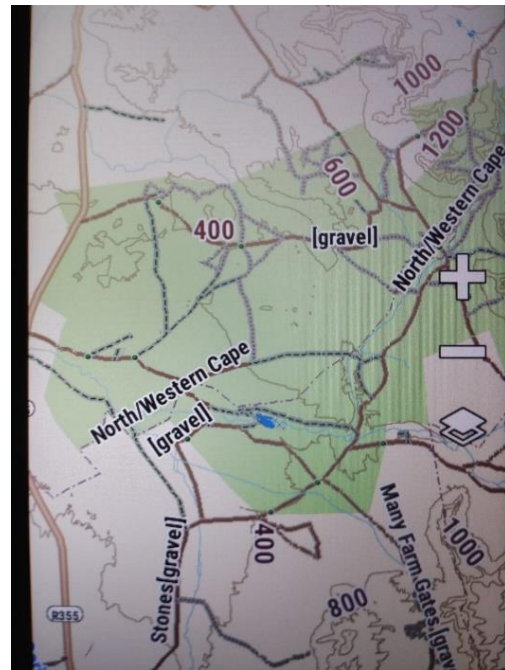
Some background: With the GPS Maps Subscription release of 24.09 and SD Card 24.10 release, Tracks4Africa introduced a new mapping style for our maps on the Garmin GPS units.

The map style we have used over more than a decade has been updated to accommodate the changes in newer GPS models. The problem we faced was the suppression of detail on the GPS map screen which results in minor roads and tracks being either feint or appearing on lower zoom levels. Since our focus is specifically to highlight remote areas we felt the need to adapt the map style to show on these devices with more definition.

Our new map style released is by far superior to the old style (on a GPS). As mentioned, the new style is also geared more towards the newer units, which we have to design towards.



Old Style on a Garmin GPS



NEW Style on a Garmin GPS

The downside of this: The unintended result is that the map style on Basecamp is slightly compromised. The lines on Basecamp will show a lot thicker than before and some users may not want to use this for planning purposes.

NOTE! Garmin also decided to discontinue Basecamp so the future of this application is uncertain and not really in our radar for optimisation. We are spending all our resources on designing a [Trip Planner website](#) to replace Basecamp.

TRACKS4AFRICA

With our latest subscription maps release, ver **24.9**, BaseCamp looked like this:



We then released ver **24.10**, which looks like this on BaseCamp: *there is a noticeable improvement of the clutter and the style differentiates between road types visually with different colours, equivalent to our online map, where the Default Garmin style does not.*



For our previous releases, the **old style** looked like this on BaseCamp:

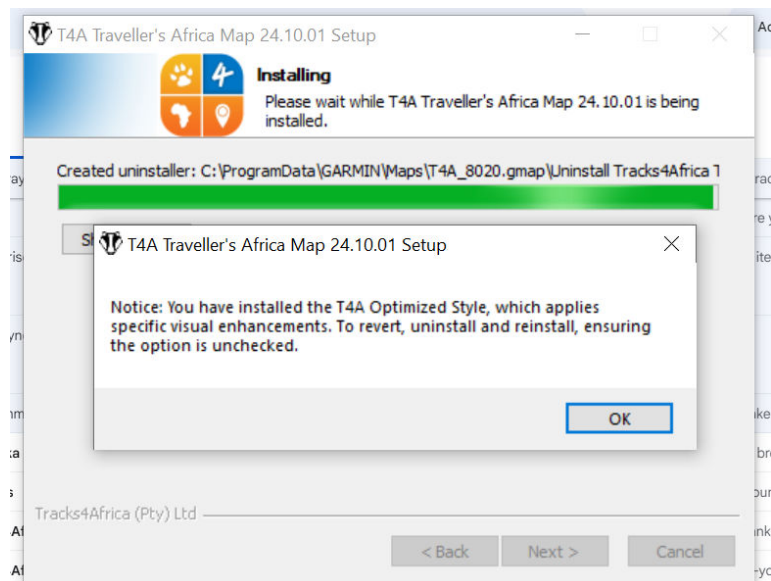


TRACKS4AFRICA

First and foremost, we genuinely appreciate your feedback and experiences with our styles. We recognize that there may have been some confusion due to our previous error concerning the compatible Garmin types. We're happy to share that this has been addressed for this release, in ver 24.10.

While the core elements of our new style remain unchanged (and we stand by it wholeheartedly!), we believe it's important for you to try the updated 24.10 version before deciding to revert to the old style. The new updated style is still designed to enhance the display on Garmin devices, while reducing visual clutter and improving your overall experience on BaseCamp.

Please note: our new version 24.10 now includes an option to install our new optimized style or to keep the old style. During the installation process you will get this message if you have chosen the optimized style (explained further below).



If you do decide to revert to the old Garmin style, please note that some roads may not appear exactly as they did in previous versions of this style. This results from a road type change to improve the colour scheme display on Garmin devices and how both styles render in BaseCamp, as they use the same base map. Rest assured, this will not affect trip planning or routing functionality.

We're committed to providing you with the best possible experience, and we truly believe that giving the updated style a chance could lead to a more satisfying navigation experience.

Thank you for your understanding and continued support. If you have any questions or need assistance, feel free to reach out!

Warm regards

Team Tracks4Africa

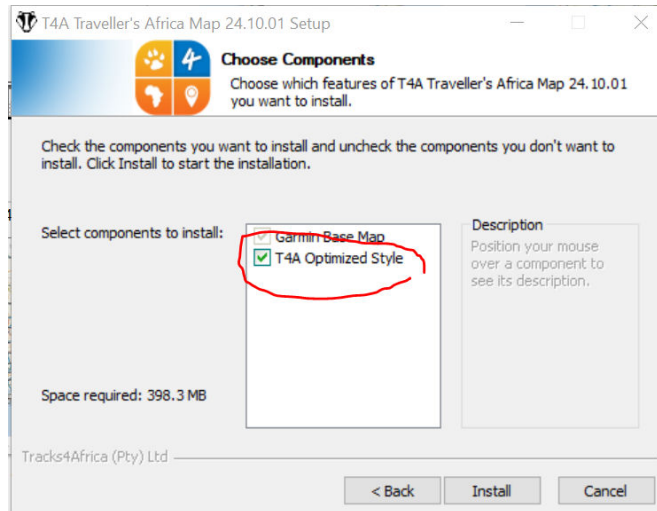
Important Changes and Instructions for T4A Users

To install the New Style onto your Garmin GPS unit:

In order to install the new style onto your Garmin GPS unit – you need to install the T4A Optimized Style during the map installation process. Then from BaseCamp, on your PC/MAC you will transfer the new optimized style to your GPS unit.

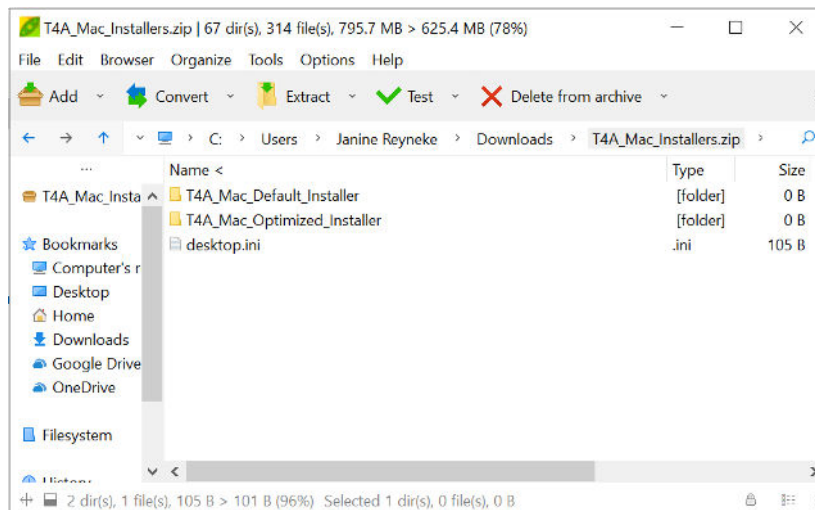
1. For Windows Users:

- The installer now lets you choose between the default Garmin Style and the T4A Optimized Style (ie. our new style), which we strongly suggest.



2. For Mac Users:

- There are now two separate installation files: one for the Default Garmin Style and another for the T4A Optimized Style (ie. our new style), which we strongly suggest.



3. For users who prefer copying the IMG file over:

- This will work as before – the IMG file contains the new style.

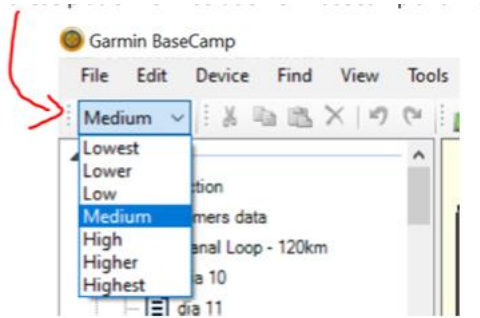
4. Improvement in T4A Optimized Style:

- The new version (24.10) reduces the “clutter” seen in version 24.09 while still enhancing the display on Garmin devices.

Important info: Basecamp

If our new style seems too cluttered for you in Basecamp when doing trip planning etc. you can:

[Change your settings in BaseCamp to lower the detail level:](#)



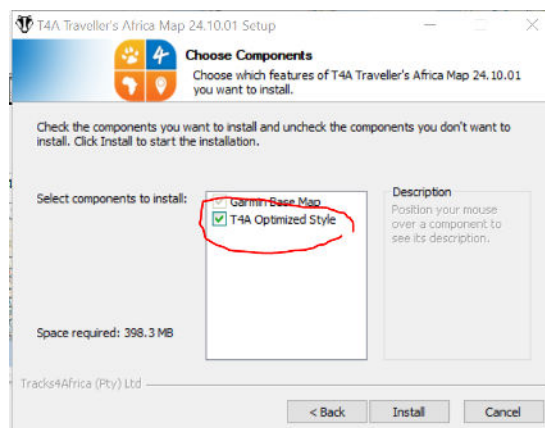
Another option is to use our old style for Basecamp by following these steps:

1. **Uninstall Previous Tracks4Africa Map Versions:**

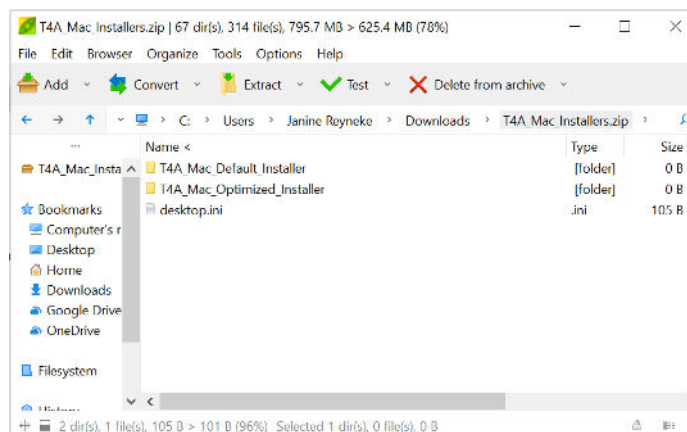
- Always uninstall any previous version of T4A from the **control panel** on both Windows and Mac before installing a new version.

2. **Then to install the OLD style:** Execute the current release file. During the installation:

1. **On Windows:** Untick “T4A Optimized style”



2. **On MAC:** Choose “T4A_Mac_Default_Installer”



3. **Refreshing BaseCamp:**

- After uninstalling and reinstalling, **you may still see old data when you first open BaseCamp.**
- **For Windows:** Press **Ctrl + G** twice to refresh.



- **For Mac:** To reset to factory defaults, follow these steps:
 1. Go to **BaseCamp** in the menu.
 2. Select **Preferences**.
 3. Click on **General**.
 4. Choose **Reset Factory Defaults**.
 5. Confirm by selecting **Restart**.
- 4. **Note on Data:**
 - Resetting to factory defaults does not delete any saved items, like waypoints, routes, or tracks. Your important information will remain safe.

Troubleshooting

- **Perhaps you would like the old style on BaseCamp for Trip Planning purposes, and the new style on your GPS unit – then do the following:** *(details on these steps are mentioned further up)*
 - Install the OLD Style T4A Maps on your PC/MAC
 - Do your trip planning in BaseCamp, using our OLD map style
 - Then to get the new optimized maps to your GPS unit, you can:
 - UN-Install the T4A Maps
 - Then RE-Install the T4A Maps – choosing the Optimized style
 - Transfer the maps to your Garmin GPS unit.
 - Note: your original routes, waypoints etc. in BaseCamp will not be lost during this process
- OR**
- Copy the IMG file from your computer straight to your GPS unit (this file contains the new style)
 - Then copy your waypoints etc. to your GPS unit from BaseCamp

Thank you for your attention, and happy exploring!